

COMMUNE DE LA TOURETTE-CABARDES

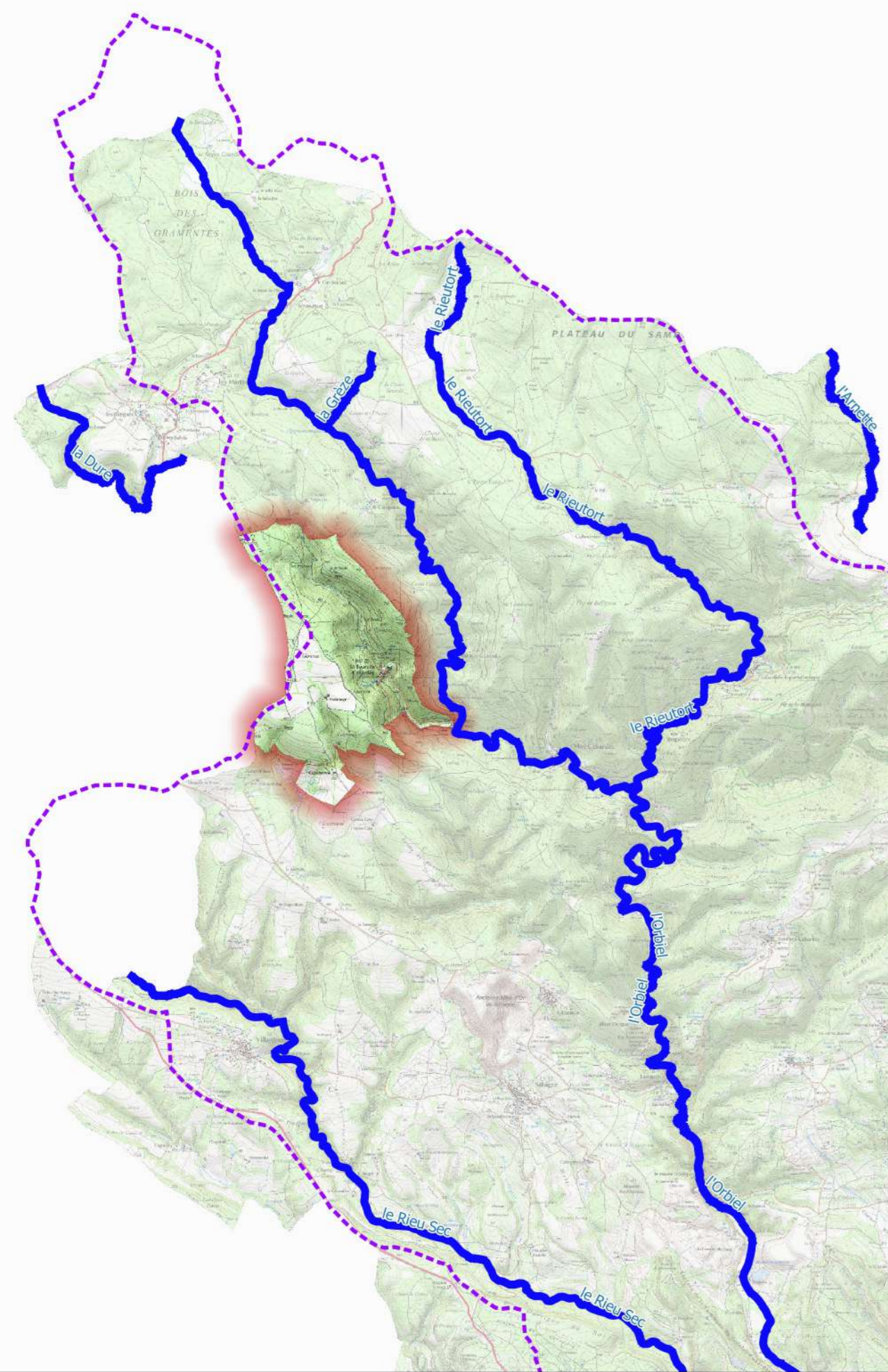
Porter à connaissance

Bassin versant de l'Orbiel-Clamoux




CARTE DES ALÉAS INONDATION

Echelle : 1/ 5000 Novembre 2023






**PLANCHE N° 1
(plan de situation)**

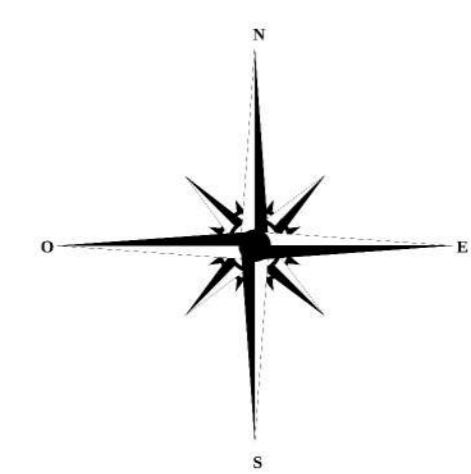


LÉGENDE

-  Limites communales
-  Bâtiments
-  Niveau d'eau pour la crue de référence (mètre NGF)

Aléa inondation

-  Aléa fort
-  Aléa modéré
-  Zone inondable par hydrogéomorphologie
-  Aléa faible ruissellement
-  Aléa très fort - digue



Date de finalisation de la carte : 2023-09-13

 0 100 200 m

Source @IGN

